

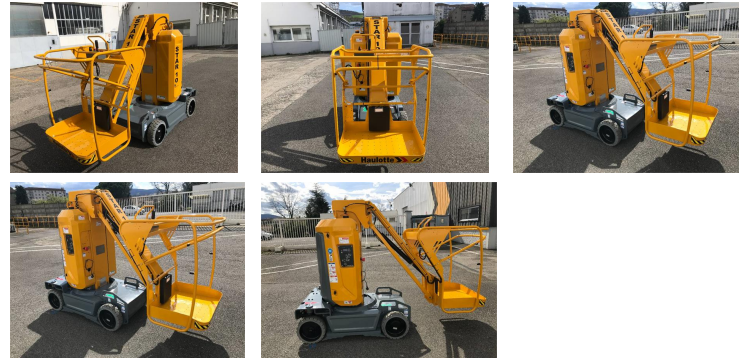
Information

Category	Vertical mast lifts HAULOTTE
Make	HAULOTTE STAR 10 - NEW BATTERIES
Year	2018
Extra options	Reconditioned
Location	Restart Center - L'Horme (42) France
Country	France

20 %

Power type	Electric
Customer asset number	R23LH1096
Hours	475 h
Gross weight	5,908 lbs
Condition level grade (1-5)	★★★★★
Original color	YES

Additional information	<p>RESTART CENTER by HAULOTTE offers for sale: RECONDITIONED STAR10 ELECTRIC VERTICAL MAST LIFT. This STAR10 has been reconditioned based onto the RESTART CENTER "CERTIFIED" program & sold with a 3-month warranty. Inform about our conditions! General Description Manufacturer Haulotte Reconditioned by Haulotte Model STAR10 Year 2018 Internal number R23LH1096 Hours 475 Fuel Electric Characteristics - Dimensions Max. working height 10m Max. platform height 8m Max. horizontal reach 3m Derivable at full height Turret rotation 345° Turning radius 1.88m Total weight: 2680kg Maximum platform capacity: 200</p>
-------------------------------	--------------------------------------------------------------------------------------------------------------------------------------------------------------------------------------------------------------------------------------------------------------------------------------------------------------------------------------------------------------------------------------------------------------------------------------------------------------------------------------------------------------------------------------------------------------------------------------------------------------------------------------



HAULOTTE GROUP

rue Emile Zola 42420 Lorette FR
+33 607971853

RESTART team
ljankov@haulotte.com

kg Allowable number of persons
& mass of equipment : Inside use
2 persons + 40kg / Outside use 1
person + 120kg Maximum rated
slope allowed - CE 3° Overall
Length x Width x Height 2.7x 1 x
1.99 m Platform dimensions 0.78
x 0.98 m Non marking tires Type
of battery 24V - 250Ah Supplied
with CE certificate, user manual
& used equipment Certificate of
Conformity. Delivery on request