

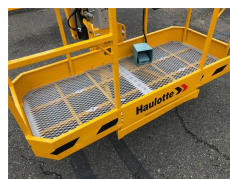
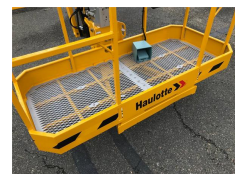
### Information

<b>Category</b>	Articulated boom lifts HAULOTTE
<b>Make</b>	HAULOTTE HA16 RTJ PRO
<b>Year</b>	2017
<b>Condition</b>	Reconditioned
<b>Location</b>	Restart Center - L'Horme (42) France
<b>Country</b>	France

20 %

<b>Power type</b>	Diesel
<b>Customer asset number</b>	R2CLH4002
<b>Hours</b>	1,286 h
<b>Gross weight</b>	14,661 lbs
<b>Condition level grade (1-5)</b>	★★★★☆
<b>Maximum lift capacity</b>	507 lbs
<b>Original color</b>	YES

<b>Additional information</b>	<p>RESTART CENTER by HAULOTTE offers for sale: RECONDITIONED HA16 RTJ PRO ROUGH TERRAIN ARTICULATING BOOMLIFT. This HA16 RTJ PRO has been reconditioned based onto the RESTART CENTER "CERTIFIED" program &amp; is sold with a 3-month warranty. Inform about our conditions! General Description Manufacturer Haulotte Reconditioned by Haulotte Model HA16 RTJ PRO Year 2017 Internal number R2CLH4002 Hours 1286 Fuel Diesel Characteristics - Dimensions Max. working height 16 m Max. platform height 14m Max. horizontal reach 8.3 m Turret rotation 360° Continuous Total weight: 6650 kg Maximum</p>
-------------------------------	--



### HAULOTTE GROUP

rue Emile Zola 42420 Lorette FR  
+33 607971853

RESTART team  
ljankov@haulotte.com

platform capacity: 230 kg  
Maximum number of occupants  
allowed: 2 Maximum rated slope  
allowed - CE 5° Overall Length x  
Width x Height 6,75 x 2,30 x 2,30  
m Platform dimensions 1,8 x 0,8  
m Engine Diesel engine Kubota  
V1505 E2B 26,5 kW 35.54 hp  
Supplied with CE certificate, user  
manual & used equipment  
Certificate of Conformity. Delivery  
on request